

Deltaweld 350/500 Systems



Quick Specs



Heavy Industrial Manufacturing

Advanced manufacturing
 Transportation and earth moving vehicles
 Pressure vessels and pipes
 Structural steel fabrication
 Sheet metal fabrication
 Light-gauge tube and sheet

Processes

MIG (GMAW)
 Flux-cored (FCAW)
 Accu-Pulse® MIG (GMAW-P)
 High-deposition MIG (HD-MIG)
 RMD®

Input Power

400 V, 3-phase, 50/60 Hz

Rated Output

Deltaweld 350: 350 A @ 60%
 Deltaweld 500: 500 A @ 100%

Output Range

Deltaweld 350: 20-425 A, 10-38 V
 Deltaweld 500: 30-650 A, 10-44 V

The new standard in advanced manufacturing, fully featured straight out-of-the-box. ONE system to tackle ANY job.

Intelx Elite feeder

- Designed for durability - The strongest and most durable drive system on the market, ensuring consistent and reliable wire feeding regardless of the environment.
- Designed for productivity - Loaded with weld processes to increase the deposition rate on thicker material and eliminates the need for a TIG root run on pipe applications.
- Designed for quality assurance - Equipped with tools to ensure that correct weld parameters are used.

Easy to use

EZ-Set simplifies parameter setup based on material thickness, removing complexity. EZ-Set can be applied to all the advanced weld processes featured in the Deltaweld system.

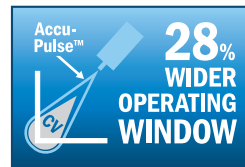


Pulse capable

Accu-Pulse offers a more forgiving arc and compensates for variations in operator technique, providing a wider operating window.



Deltaweld 500
 with Running Gear and Cooler



Insight Core™

Insight Centerpoint™

Optional Welding Intelligence™ weld monitoring system. Get more done, produce higher-quality welds and control costs. See page 4 for more information.

Weld programs:

The system provides out-of-the-box weld programs for:

- Steel
- Stainless steel
- Aluminium
- Nickel
- Copper - nickel
- Silicon - bronze
- Titanium



Power source is warranted for three years, parts and labor.



International Headquarters Miller Electric Mfg. LLC

An ITW Welding Company
 1635 W. Spencer Street
 Appleton, WI 54914 USA

MillerWelds.com/europe

Miller Europe

Orbital Tools GmbH
 Josef Schuettler Str. 17
 78224 Singen, Germany
 Tel.: +49 7731 792 400
sales.MILLER@itwwelding.com

ITW WELDING Sales Office UK

77 New Court Way
 Ormskirk, Lancashire L39 2YT
 United Kingdom
 Tel.: +44 1695 585 910
sales.UK@ITWWelding.com

Deltaweld® 350/500 System Processes

The Deltaweld system is designed for advanced manufacturing and is equipped with weld processes developed by Miller to increase productivity and/or increase the quality of the weld. Programs have been developed to suit applications such as:

- Out of position welding with solid and flux cored wires.
- High deposition on thick material.
- Pipe root and gap filling on thin materials.
- Low spatter and adaption to poor parts fit-up.

Best For	Standard Spray	HD MIG	Accu-Pulse	Short Circuit	RMD
Deposition	A	A	A	D	D
Gap filling	D	D	B	A	A
Low heat input	D	C	B	A	A
Out-of-position welds			A	B	B
Low spatter	A	A	A	C	B
Thick metals	A	A	A	D	D
Thin metals			B		
Increased travel speed	A	A	A	B	C

HOT → → **COLD**

Accu-Pulse®

A Miller unique Pulse process suitable for majority of industrial welding applications. Most adaptive arc, compensating for less perfect fit-up and “tip-to-work piece” variations on any plate thickness. Designed for all weld positions.

High-deposition MIG (HD MIG)

- Higher deposition rate and higher travel speed on thicker materials.
- Better bead appearance and less material distortion.

RMD®

- Extremely low heat input.
- Can replace TIG welding on pipe root applications.
- Ideal for bridging gaps on thin materials.

Deltaweld® 350 Specifications (Subject to change without notice.)



Process	Output rating			Amps input at rated output (50 Hz)	Dimensions (including lifting eye)	Net weight (kg)
	Current (Amperes)	Voltage (DC)	Duty cycle (%)	400 VAC		
GMAW (MIG)	300	29	100	15.2	H: 568 mm W: 390 mm D: 740 mm	52
	350	31.5	60	19.2		
	425	35.3	30	25.6		

Deltaweld® 500 Specifications (Subject to change without notice.)



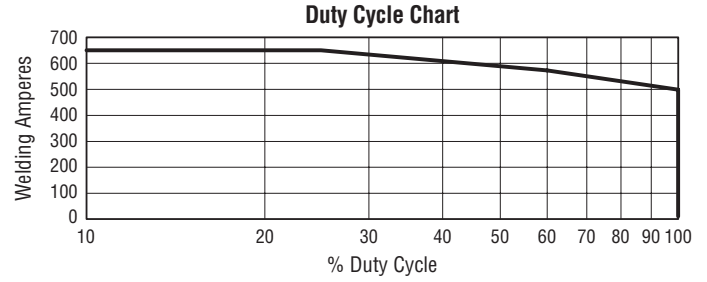
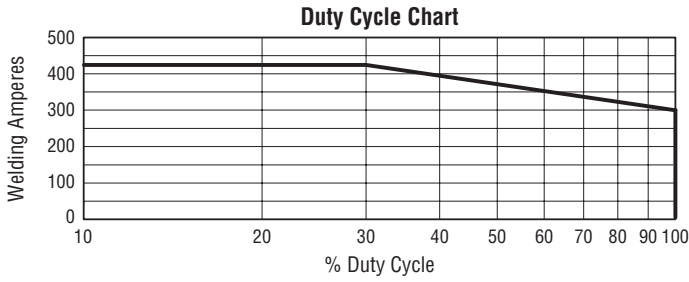
Process	Output rating			Amps input at rated output (50 Hz)	Dimensions (including lifting eye)	Net weight (kg)
	Current (Amperes)	Voltage (DC)	Duty cycle (%)	400 VAC		
GMAW (MIG)	500	39	100	33.4	H: 567 mm W: 390 mm D: 804 mm	66
	575	43	60	41.5		
	650	44	25	48.4		

Intelix™ Feeder Specifications (Subject to change without notice.)



Input Power	Welding Power Source	Input Welding Circuit Rating	Wire Feed Speed	Dimensions (H x W x D)	Net weight (kg)
50 VDC	Deltaweld 350 or 500	600 A at 113 VDC, 60% duty cycle	1.3 - 20 m/min.	413 x 314 x 708 mm	20.3

Deltaweld® 350/500 Performance Data



Intelx™ Elite feeder features

Accu-Mate™ connection (for Miller power lin) aligns the gun perfectly in the drive-roll carrier – preventing the gun from being pulled loose and providing consistent wire feeding. A Euro-connector is included in the delivery.

Drive rolls and guides are common with other Miller® industrial feeders (use existing, not new parts).

Rotatable drive assembly allows operator to rotate the drive, eliminating severe bends in the wire feed path. This extends gun-liner life and aids in feeding difficult wires.

Inlet guide and intermediate guide installation is toolless.

- Full color LCD display
- Weld sequence control
- Trigger select
- Trigger dual schedule
- Memory slots
- Locks and Limits
- Remote voltage
- Arc control
- Insight Centerpoint Premium compatible
- EZ-Set
- Out-of-Box programs
- Auto thread and auto purge
- XR plus push-pull gun compatible



Soft keys to easily navigate menus

Full-color LCD screen to simplify the setup and operation of a fully featured feeder

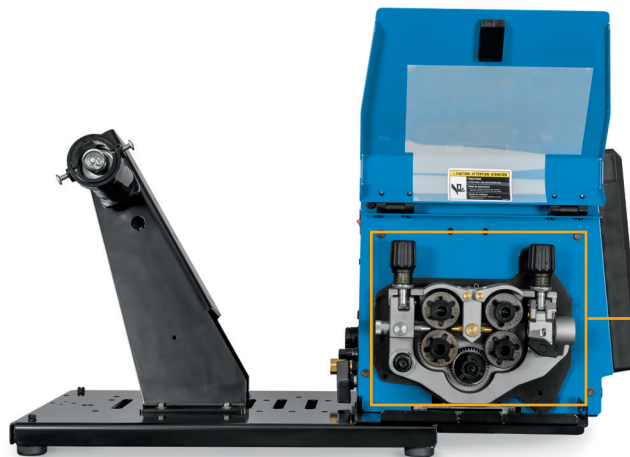
Arc control to fine tune welding arc

Memory buttons for quick program recall

Trigger connections for standard MIG gun and XR-Aluma-Pro™ Plus

Intelx™ Elite feeder Drive mechanism

- Rotatable drive
- Wire jog and purge
- Optional spool cover available
- Optional feeder swivel
- Optional running gear for feeder



Heavy duty drive system
Four drive rolls

Insight Welding Intelligence™

With an Insight weld monitoring system you can get more done, produce higher-quality welds and control costs.

Insight Core™

Insight Core is an easy-to-use welding information solution that gives visibility into your operation so you can improve productivity.

- **Measure welding productivity.** See each welder's arc-on time to set baselines, plan improvements and measure goals.
- **View easy-to-understand reports.** Dashboards show trends and develop reports. Compare welders, cells and plants.
- **Identify welding costs.** Make improvements to reduce expenses.
- **Easily install and use.** Just connect it to the internet. View secure data on any web-connected device anywhere.



Insight Centerpoint™ (Purchased license(s) of Centerpoint required.)

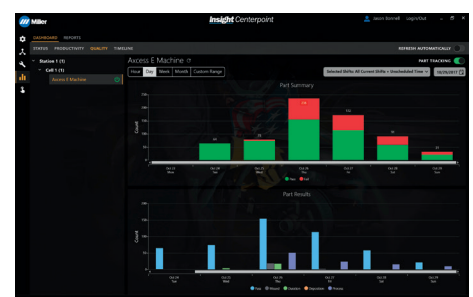
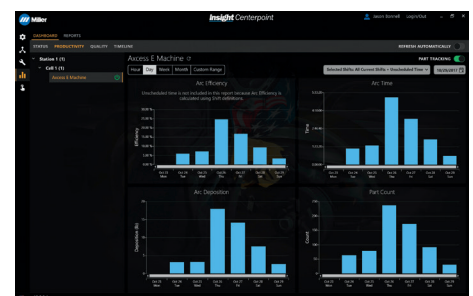
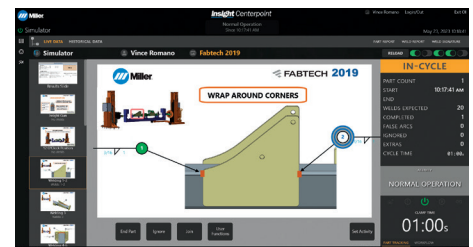
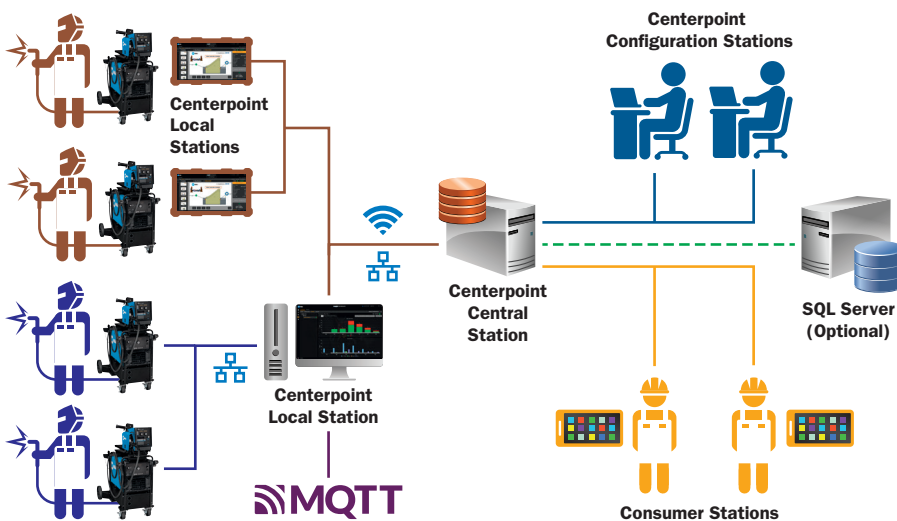
On-premises application providing productivity/utilization metrics, capture of welding parameters, operator weld sequence governance, and integration with enterprise IIoT solutions. Scalable to end user needs.

- **Measure welding productivity.** See each welder's arc-on time to set baselines and plan improvements. Capture activities to understand downtime reasons.
- **Govern operator tasks.** Through an easy-to-use operator interface direct welding and non-welding tasks to follow standard work practices, reduce out of sequence welds, and prevent missing welds.
- **Reduce training costs.** Utilize Centerpoint as the "Digital Mentor" to train new welders on proper production steps freeing up senior personnel for more productive activities.
- **Configure weld process remotely.** Full fleet management allows configuration of Deltaweld settings from Centerpoint.

Modes of operation

- **Basic mode** included at no cost.
- **Premium mode** requires a purchased capability key for each Deltaweld.

301485 Centerpoint v10 Single License
301703 Centerpoint Basic Capability Activation
301490 Centerpoint Premium Capability Activation



Deltaweld 350 / 500 system - proposed packages



Deltaweld 350 package

Part number	Description
907853001	Deltaweld 350
301705	Deltaweld Intellx Elite feeder
7500000005	Deltaweld cooler
7600000001	Deltaweld running gear
7400000021	Water cooled interconnection cable, 3 meters

Deltaweld 350 with Insight Centerpoint package

Part number	Description
907853003	Deltaweld 350 with Insight Centerpoint
301705	Deltaweld Intellx Elite feeder
7500000005	Deltaweld cooler
7600000001	Deltaweld running gear
7400000021	Water cooled interconnection cable, 3 meters

Deltaweld 500 package

Part number	Description
907854001	Deltaweld 500
301705	Deltaweld Intellx Elite feeder
7500000005	Deltaweld cooler
7600000001	Deltaweld running gear
7400000021	Water cooled interconnection cable, 3 meters

Deltaweld 500 with Insight Centerpoint package

Part number	Description
907854003	Deltaweld 500 with Insight Centerpoint
301705	Deltaweld Intellx Elite feeder
7500000005	Deltaweld cooler
7600000001	Deltaweld running gear
7400000021	Water cooled interconnection cable, 3 meters

XR™ Plus Push-Pull Guns



XR-Aluma-Pro™ Plus Guns

Air-Cooled

301575 4.6 m

301574 7.6 m

301739 10.7 m

Water-Cooled

301576 4.6 m

301577 7.6 m

301740 10.7 m

Available in air- or water-cooled versions in multiple lengths for extended reach with trouble-free, reliable feeding.

Aluminum-series-specific tension setting ensures smooth wire feeding performance with 4000 or 5000 series aluminum wires.

Replaceable feed cable liner is designed to provide consistent arc performance. It also reduces parts cost and service time by allowing a simple means of removing and replacing liner and not the complete feed cable.

Isolated common knurled drive roll helps reduce wear, reducing down time and cost.

Easy-to-rotate self-seating head tube allows for better access into tight spots, providing excellent current transfer.

Serviceability. These guns feature a full-length hook-and-loop seamed leather jacket with integrated strain reliefs for easy cable maintenance and protection. Additionally, the Aluma-Pro Plus guns feature quick con nections between the control cable and electrical components (trigger, motor, potentiometer).

Specifications (Subject to change without notice.)

Model	Welding Current Rating	Wire Feed Speed	Wire Type and Diameter Capacity	Dimensions (H x W x D)	Net Weight (Gun only)
XR-Aluma-Pro Plus (Air-cooled)	300 A at 100% duty cycle	1.8–23 m/min. dependent on feeder used	0.8–1.6 mm aluminum wire Requires gun wire kit 230708 to run 1.6 mm wire	H: 127 mm W: 64 mm D: 432 mm	1.1 kg
XR-Aluma-Pro Plus (Water-cooled)	400 A at 100% duty cycle	1.8–23 m/min.			1.3 kg

Drive Roll Kits and Guides

Select drive roll kits from chart below according to type and wire size being used. Drive roll kits include four drive rolls, necessary guides and feature an anti-wear sleeve for inlet guide.

Wire Size	V-groove for hard wire	U-groove for soft wire or soft-shelled cored wires	V-knurled for hard-shelled cored wires	U-cogged for extremely soft wire or soft-shelled cored wires (i.e., hard facing types)
0.6 mm	087132	—	—	—
0.8 mm	046780	—	—	—
0.9 mm	046781	044750	046792	—
0.9 and 1.2 mm	227061*	244293	—	—
1.0 mm	191917	—	—	—
1.1/1.2 mm	046782	046785	046793	083319
1.3/1.4 mm	046783	046786	046794	—
1.6 mm	046784	046787	046795	046800
1.8 mm	—	—	—	—
2.0 mm	—	046788	046796	046801

*Included with Intelix feeders. Drive roll is dual-size reversible with one 0.9 mm and one 1.2 mm groove.

Drive Roll Kits and Guides

Wire Guides

Wire Size	Inlet Guide	Intermediate Guide
0.6-1.0 mm	221030	056206
1.2-1.3 mm	221030	056207
1.6-2.0 mm	221030	056209
2.0-3.2 mm	229919	056211

Note: When ordering hard wire kits, retain factory-supplied inlet guide

Nylon Guides for Feeding Aluminum

Wire Size	Inlet Guide and Intermediate Guide Kits
0.9 mm)	293928
1.2 mm	293929
1.6 mm	293930

Note: U-groove drive rolls are recommended when feeding aluminum wire.

Ordering Information

Equipment and Options	Stock No.	Description	Qty.	Price
Power source				
Deltaweld 350	907853001			
Deltaweld 350 with Insight Centerpoint	907853003	Prepared for Insight Centerpoint (activation key required)		
Deltaweld 500	907854001			
Deltaweld 500 with Insight Centerpoint	907854003	Prepared for Insight Centerpoint (activation key required)		
Feeder, cooler and running gear				
Deltaweld feeder	301705	Including Euro-adaptor and drive rolls		
Deltaweld cooler	7500000005			
Deltaweld running gear	7600000001	For single gas cylinder (optional dual gas cylinder available)		
Interconnection cables				
Air cooled interconnection cable, 3 m	7400000016			
Air cooled interconnection cable, 5 m	7400000017			
Air cooled interconnection cable, 8 m	7400000018			
Air cooled interconnection cable, 15 m	7400000019			
Air cooled interconnection cable, 25 m	7400000020			
Water cooled interconnection cable, 3 m	7400000021			
Water cooled interconnection cable, 5 m	7400000022			
Water cooled interconnection cable, 8 m	7400000023			
Water cooled interconnection cable, 15 m	7400000024			
Water cooled interconnection cable, 25 m	7400000025			
Optional accessories				
Swivel for wire feeder				
Handle, including cable storage				
Spool cover				
Running gear for feeder				
Suspension hook	058435			
Return cable kit, 400 A, 70 mm ² , 5 m	57014340			
Coolant 3.8 l	043810			

Date:

Total Quoted Price:

Miller recommends *Elega* consumables

Distributed by:

